

State of Wyoming Corner Record

(In compliance with the *CORNER PERPETUATION AND FILING ACT*, Wyoming Statutes, 1997 Section 33-29-140 et. seq., and the Rules and Regulations of the Board of Professional Engineers and Professional Land Surveyors)

Reverse side of this form may be used if more space is needed.

Record of original survey and citation of source of historical information (if corner is lost or obliterated). Description of corner monumentation evidence found and/or monument and accessories established to perpetuate the location of this corner. Sketch of relative location of monument, accessories, and reference points with course and distance to adjacent corner(s) (if determined in this survey). Method and rationale for reestablishment of lost or obliterated corner.

LOCATION: Northeast Corner of Section 31, T14N, R65W, 6th Principal Meridian, Laramie County.

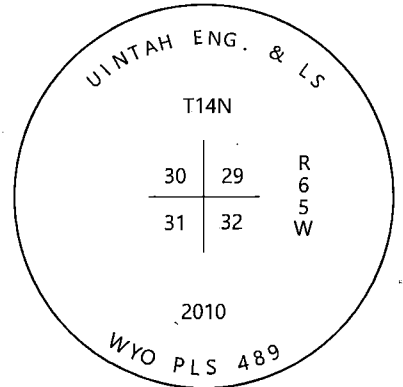
RECORD: GLO - Set limestone 20" x 12" x 8"

1993 - Doyle Abrahamson found a 12" x 5" x 10" sandstone with a chiseled "x" on top of a mound of stones.

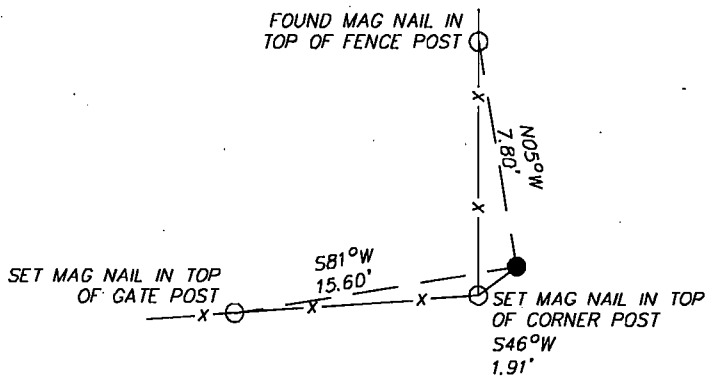
1997 - Roger Krum, LS 2613, found a 12" x 10" x 5" sandstone with a chiseled "x" on top.

RECOVERED: 2019 - Westwood Professional Services found a 2.5" aluminum cap stamped LS 489.

RESET: Accepting location of the monument as the corner location. Set ties as shown.



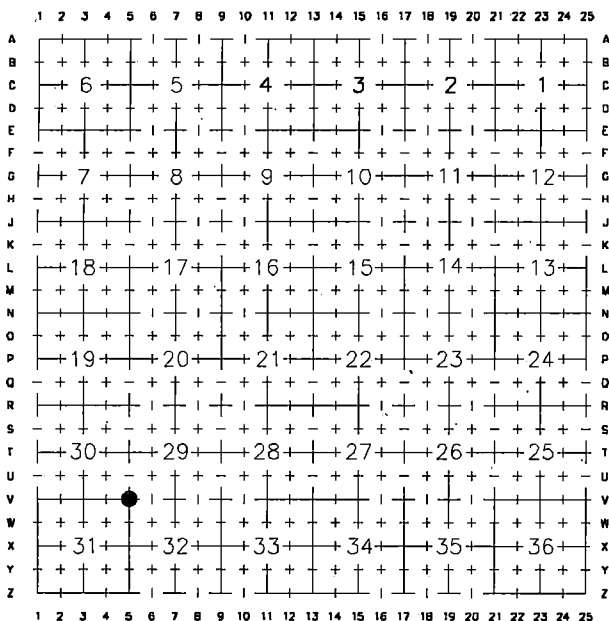
Monument Inscription



Date of Field Work: 10/12/2019

Office Reference: 22237.02

Cross Index Plat



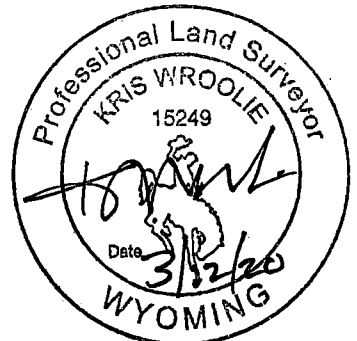
Firm/Agency, Address

Westwood Professional Services
3701 12th St. N. Ste. 206
St. Cloud, MN 56303

Telephone Number: (320)-253-9495

This corner record was prepared by me or under my direction and supervision.

SEAL & SIGNATURE



REC# #: 775848
RECORDED 4/15/2020 AT 10:17 AM BK# 2668 PG# 280
Debra K. Lee, CLERK OF LARAMIE COUNTY, WY PAGE 1 OF 1

Corner Name Northeast Corner Section 31, T 14 N, R 65 W, 6th P.M.

Cross-Index No.: V-5

County: Laramie Wyoming

SBRPEPLS/PLSW: March 1994; PLSW January 1998